

## IBAMIX

# Technical Data Sheet

### Description

**IBAMIX** powder coatings are decorative looking products obtained by physically mixing different coloured powder coatings. **IBAMIX** powder coatings are available in all chemistry, like epoxy-polyester, polyester TGIC and TGIC-free versions.

### Characteristics

Aesthetic appearance with mixed effect  
Improved application characteristics  
Less waste and pollution to the environment

### Applications

Metal furniture  
Lighting equipment  
Electronic equipment  
Steel doors  
White goods  
Shelving systems  
Architectural applications  
Decorative applications

### Product Properties

<b>Colour</b>	A wide range of mixed colours
<b>Surface</b>	Gloss GL – Semigloss HR – Semimatt CS – Matt CM – Structure ST – Wrinkle WR
<b>Specific gravity</b>	Check for TDS for the specific series.
<b>Shelf Life</b>	Check for TDS for the specific series.

### Application Data

<b>Application</b>	Corona/Tribo (Can be applied by tribo guns if product code has “T” for the 6th character)
<b>Curing</b>	Check for TDS for the specific series.
<b>Film Thickness</b>	Check for TDS for the specific series.
<b>Theoretical cons.</b>	Check for TDS for the specific series.

### Application Guide

**IBAMIX** powder coating does not require a special application. Check TDS for the specific series.

# IBAMIX

## Care and Maintenance

**IBAMIX** powder coatings should be regularly washed with warm water and mild liquid detergent, followed by a fresh water rinse to maintain the attractive appearance of the powder cured film. Use a soft cloth that does not scratch the surface. The detergent used for non-chemical resistant products should have a neutral pH. The surface should not be left with detergent for a long time and should be rinsed immediately with water.

The use of abrasive cleaners is not recommended, nor is the use of active organic solvents.

## Health and Safety

The SDS is an integral part of using this product as it contains information on the potential health effect of exposure, personal protective equipment needed. It is recommended to contact to Sales and Customer Service Offices for further information.

## Precautions and Limitations

As a result of possible wide application variations and stoving conditions, **IBAMIX** powder coatings may show variation, between İBA Kimya Powder Coatings prepared samples and production applied material. Therefore, it is the applicator and/or their customer's responsibility to ensure the product conforms to their requirements.

For optimum performance ensures recommended dry film thickness is obtained.

**IBAMIX** powder coatings should be homogeneous before application. To ensure this, the entire box must be placed in the feeding chamber and should be fluidized for about 10 minutes at minimum level which will provide gurgitation in the chamber.

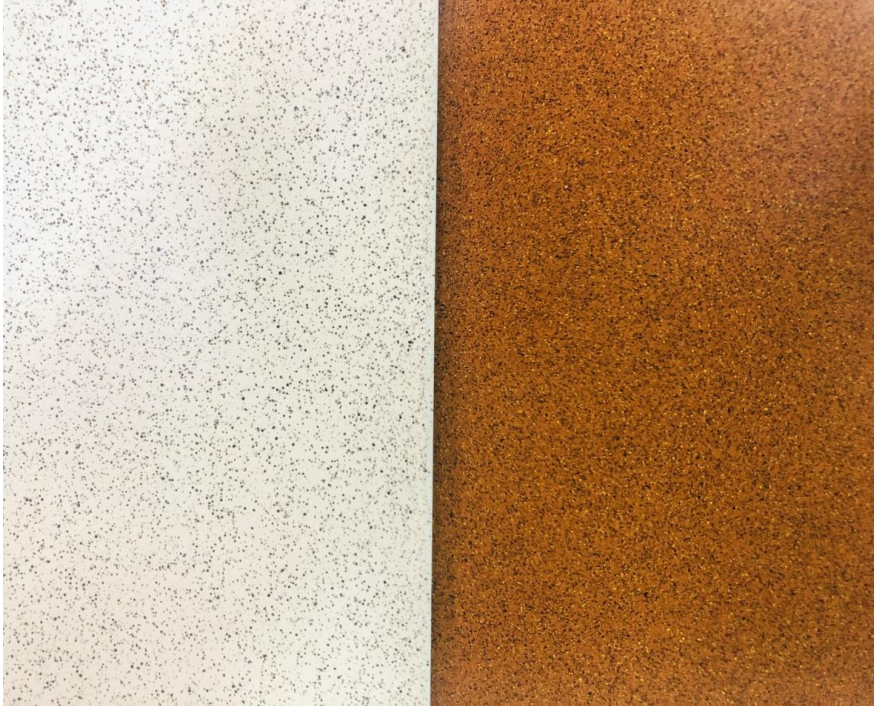
The mixed effect of the cured powder coating will vary when the same powder coating is applied through different spray equipment.

The mixed effect may change when using recycled coating. If recycled coating is used, it should be added homogeneously.

## Transport and Storage

<b>Packaging</b>	15-20 kgs. Heavy polyethylene bag in a corrugated carton
<b>Shipment</b>	Not dangerous goods. No special transport requirements.
<b>Storage Conditions</b>	Storage temperatures should be kept below 30 C° and 50% relative humidity. Powder should be stored in closed containers.

## IBAMIX



*DISCLAIMER: All the information provided in this data sheet depends on our knowledge and experience up to date and may be subject to revision as new technology and experience evolve. Since the conditions of application may vary depending on the substrate, physical conditions and other variables, users should conduct necessary tests to determine the conformity of the product for its intended use. We do not accept liability since the application, use and processing of the products take place beyond our control and supervision. Moreover, our liability for breach of warranty is exclusively limited to replacement of the product or refund of its price and we are not liable for incidental, indirect or consequential damages under any circumstances.*